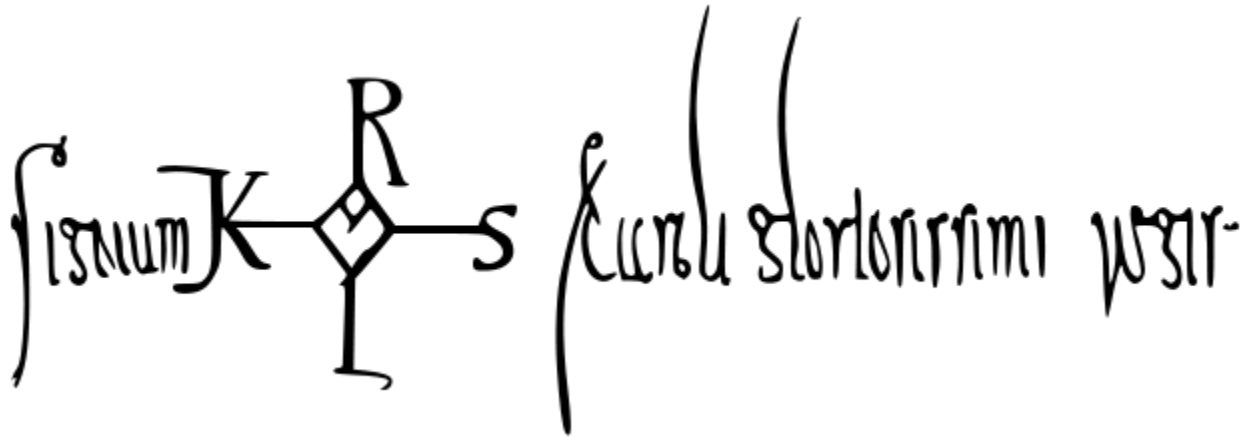
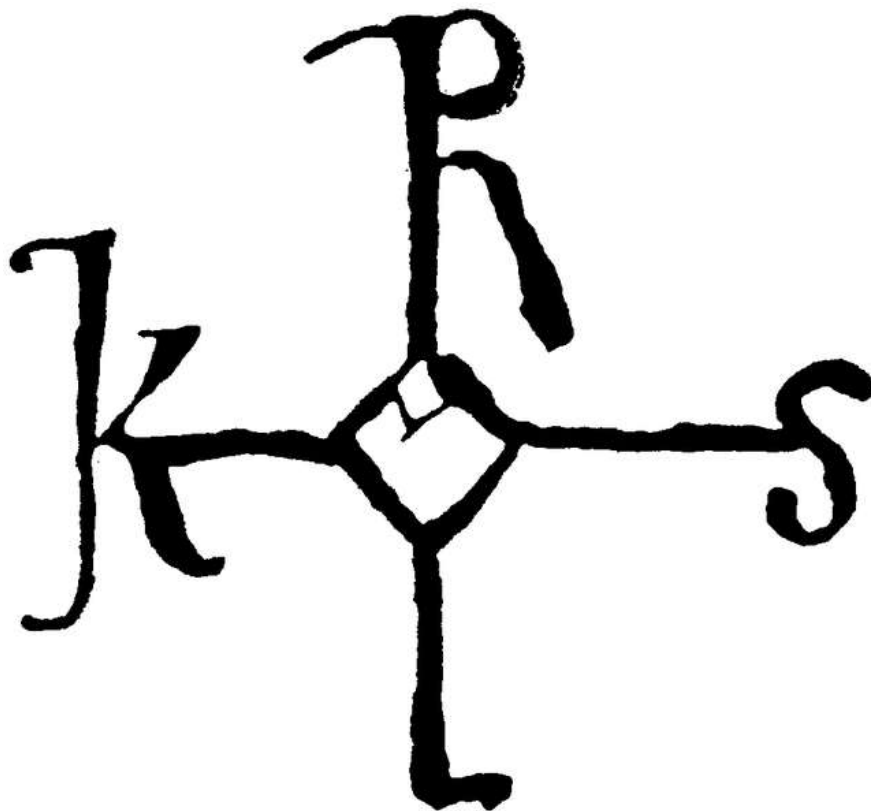


STATION 1



"Signum KAROLVS Caroli gloriosissimi regis", Monogram of Charlemagne, from the subscription of a royal diploma (790)



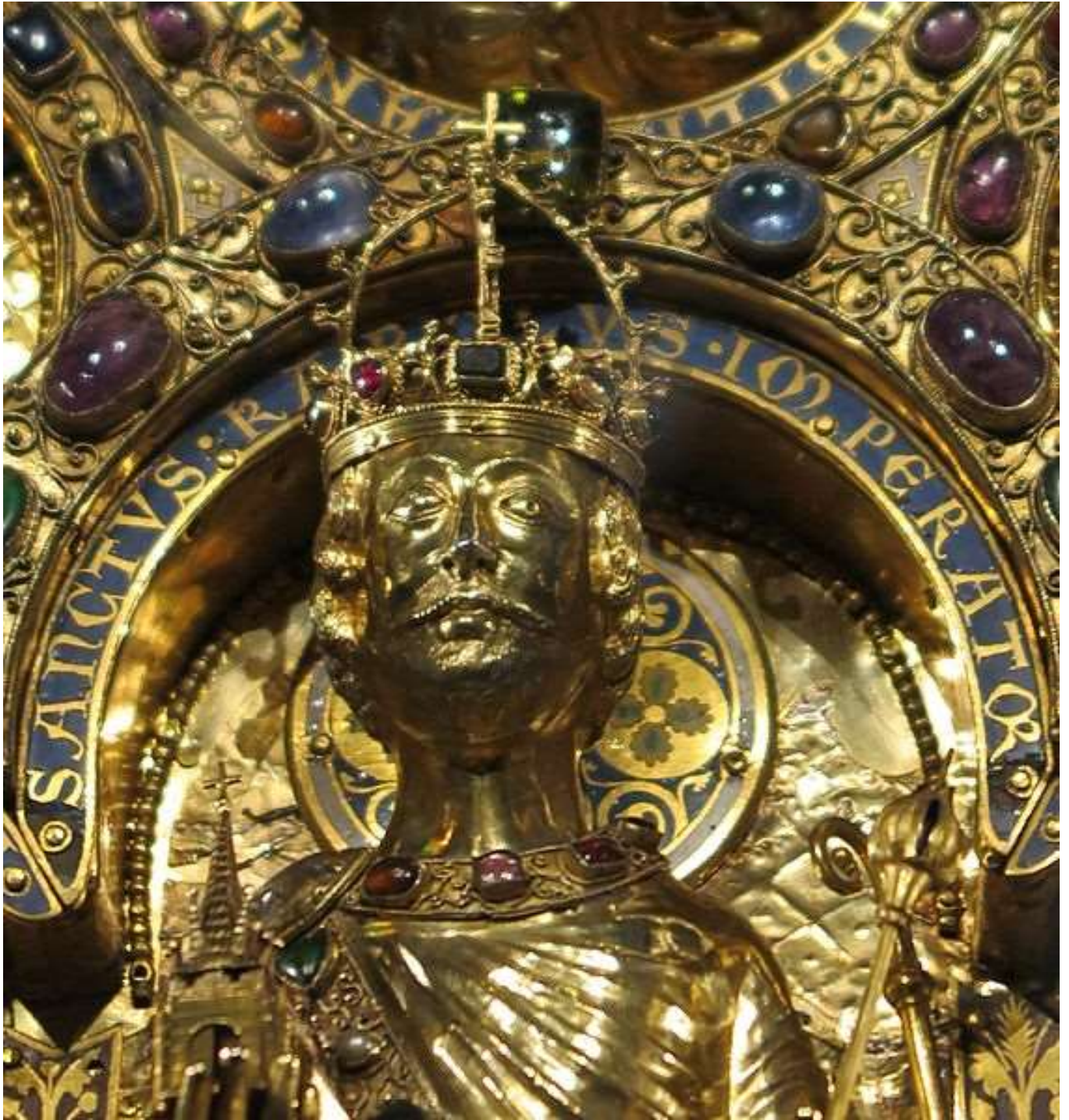
Autograph of Charlemagne

STATION 2



Obverse of a Charlemagne denier coined in en:Frankfurt from 812 to 814, today at the en:Cabinet des Médailles in Paris.

STATION 3



Charlemagne on the front side of the Shrine of Charlemagne, in Aachen, Germany (between 1182 and 1215)

STATION 4



"Charlemagne and the Pope". The Frankish king Charlemagne was a devout Catholic who maintained a close relationship with the papacy throughout his life. In 772, when Pope Adrian I was threatened by invaders, the king rushed to Rome to provide assistance. Shown here, the pope asks Charlemagne for help at a meeting near Rome. Hand-coloured print by Antoine Vérard (1493).

STATION 5



The statue of Charlemagne in front of St. Ansgar's Church in Hamburg's Neustadt district was created in 1889 by Engelbert Peiffer (1830-1896). It shows Charles with the imperial crown, in the hand the emblem of Hamburg, as founder of the city.

Record your group's thoughts on the different artifacts of Charlemagne below. Make sure that everyone in your group is contributing to sharing ideas!

	Station 1	Station 2	Station 3	Station 4	Station 5
What is the date of the artifact? Is it before, during or after Charlemagne's time?					
What is the purpose of the artifact? Why was it made? What does it do?					
What important fact(s) does it reveal about Charlemagne?					
What does the artifact reveal about the purpose behind the creation of the artifact? How does the artifact make you feel about Charlemagne? Think PROPAGANDA.					
How does the artifact support that Charlemagne was 'great'?					

